

**Equity (k)NOW:
Creating More Healthy Equitable
Communities**

New Partners for Smart Growth

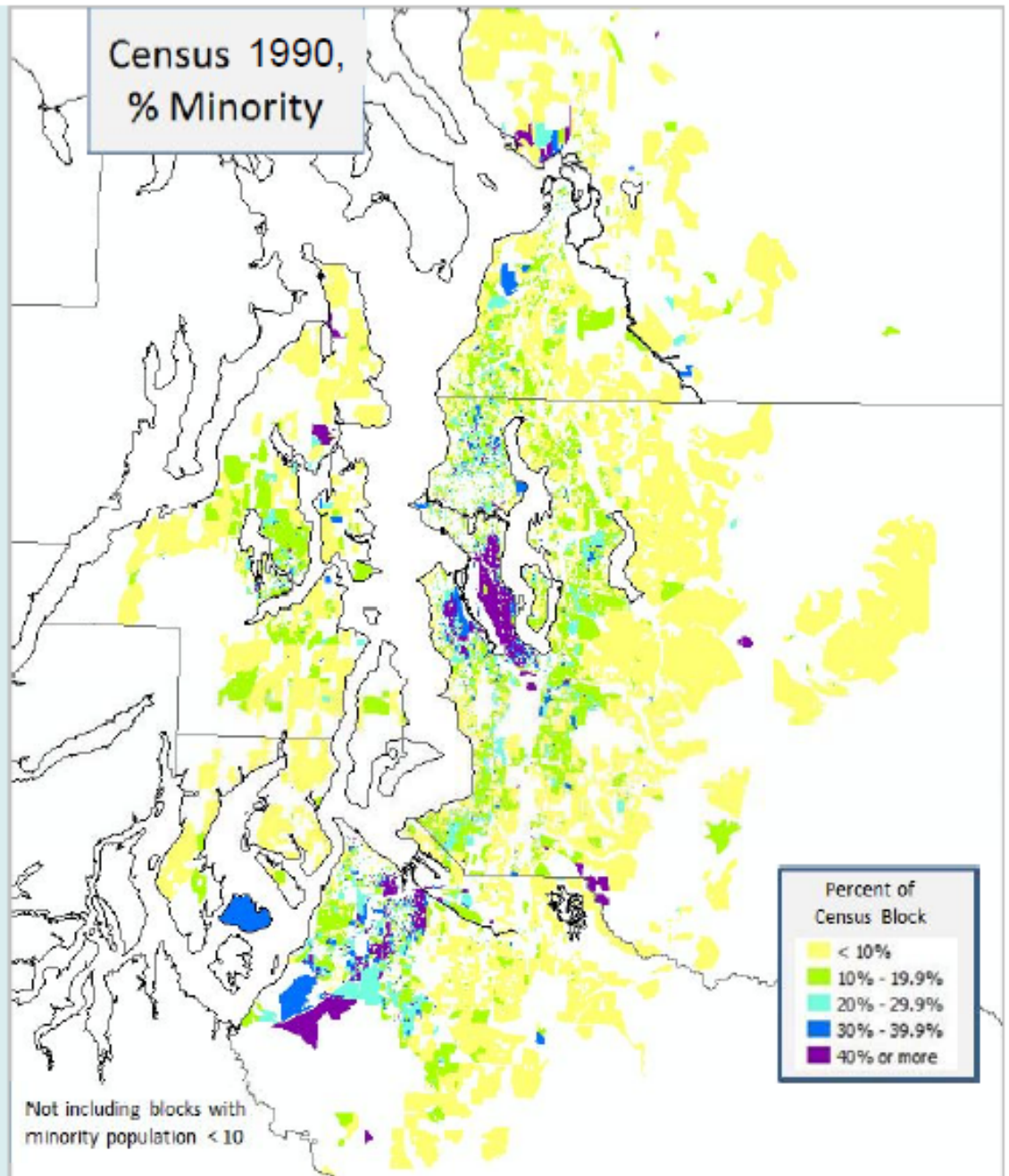
Michael Brown, Seattle Foundation

Hayley Bonsteel, Futurewise

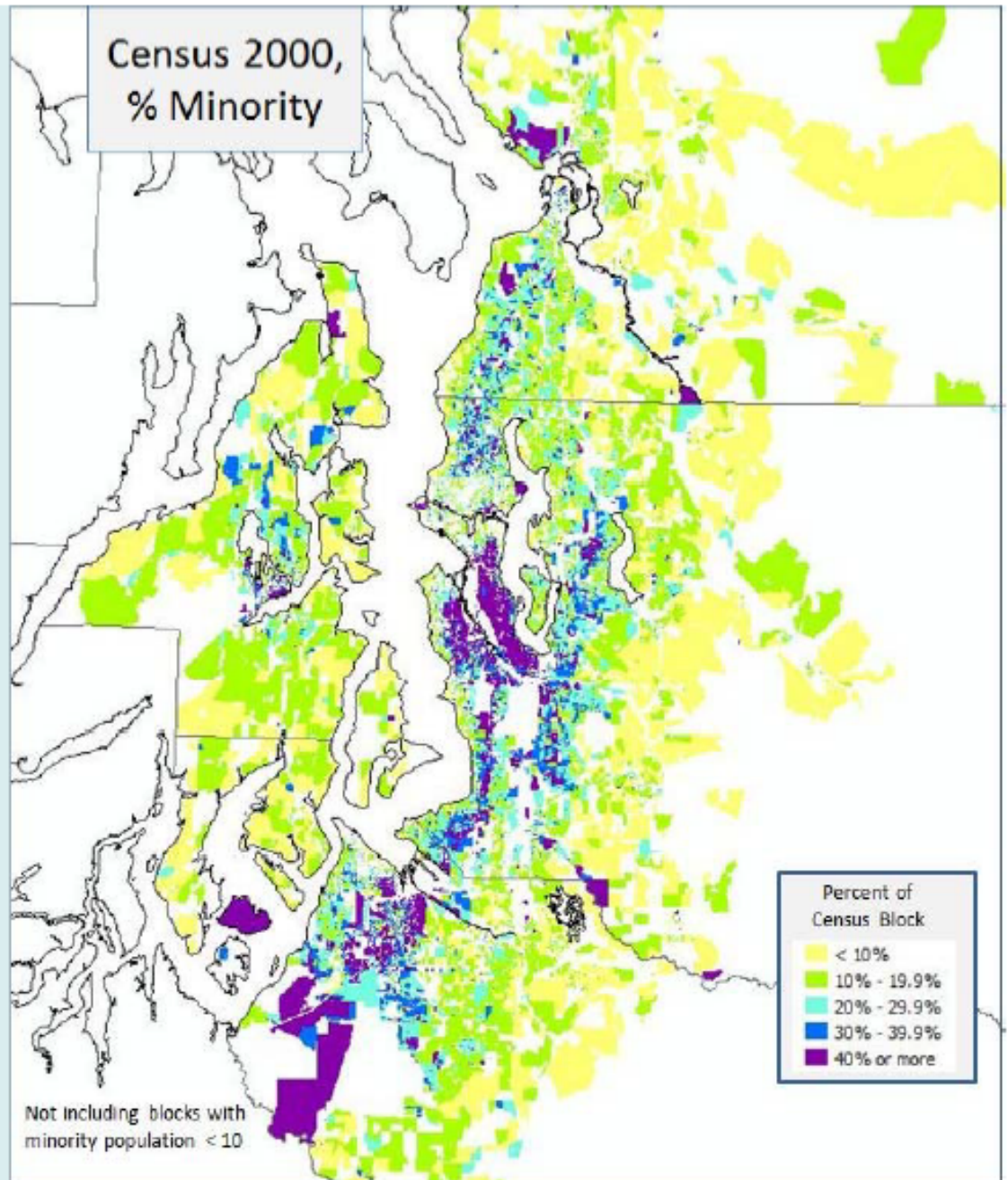
Miguel Maestas, El Centro de la Raza

Hilary Franz, Futurewise

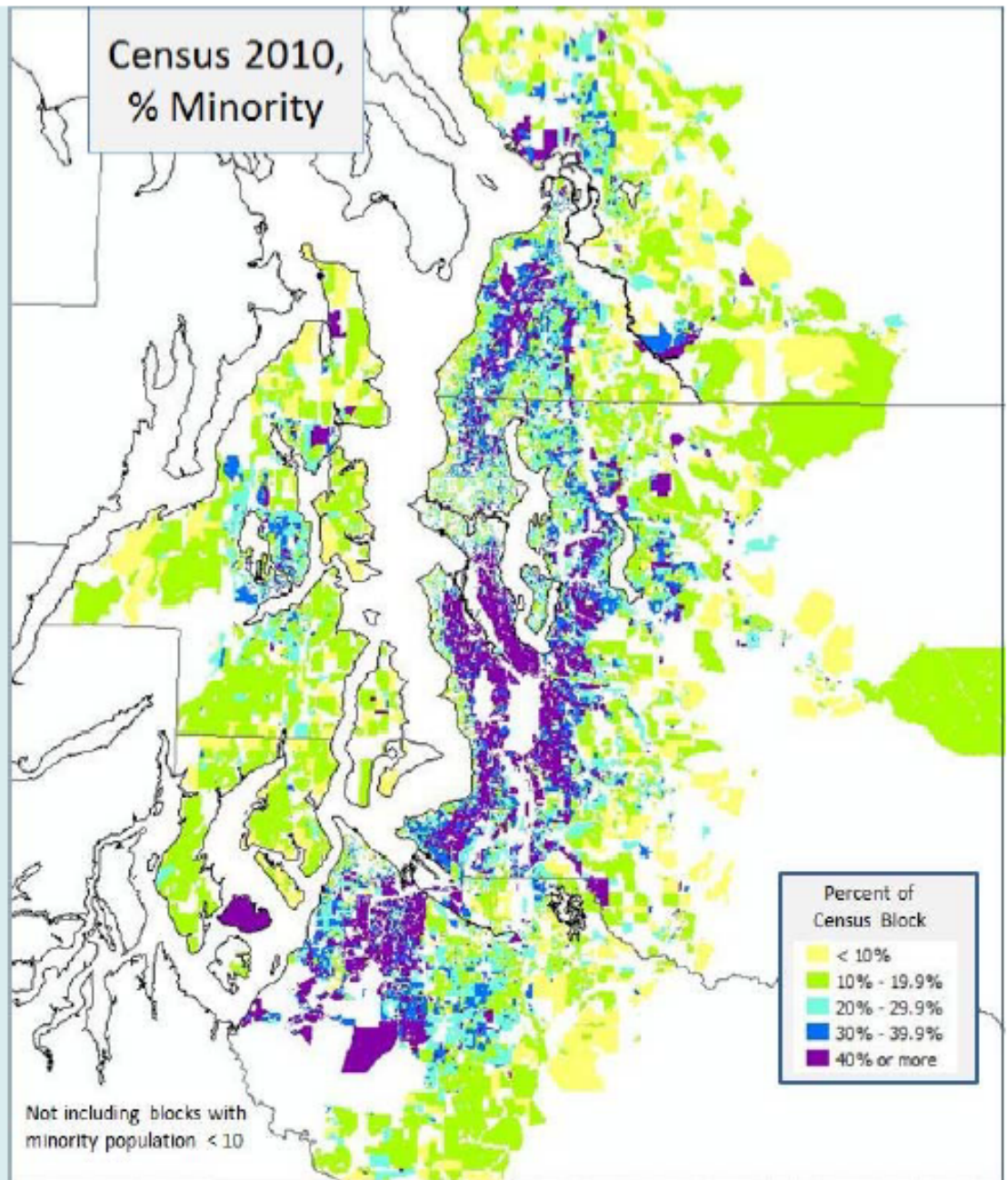
The region's population is becoming increasingly diverse:
1990



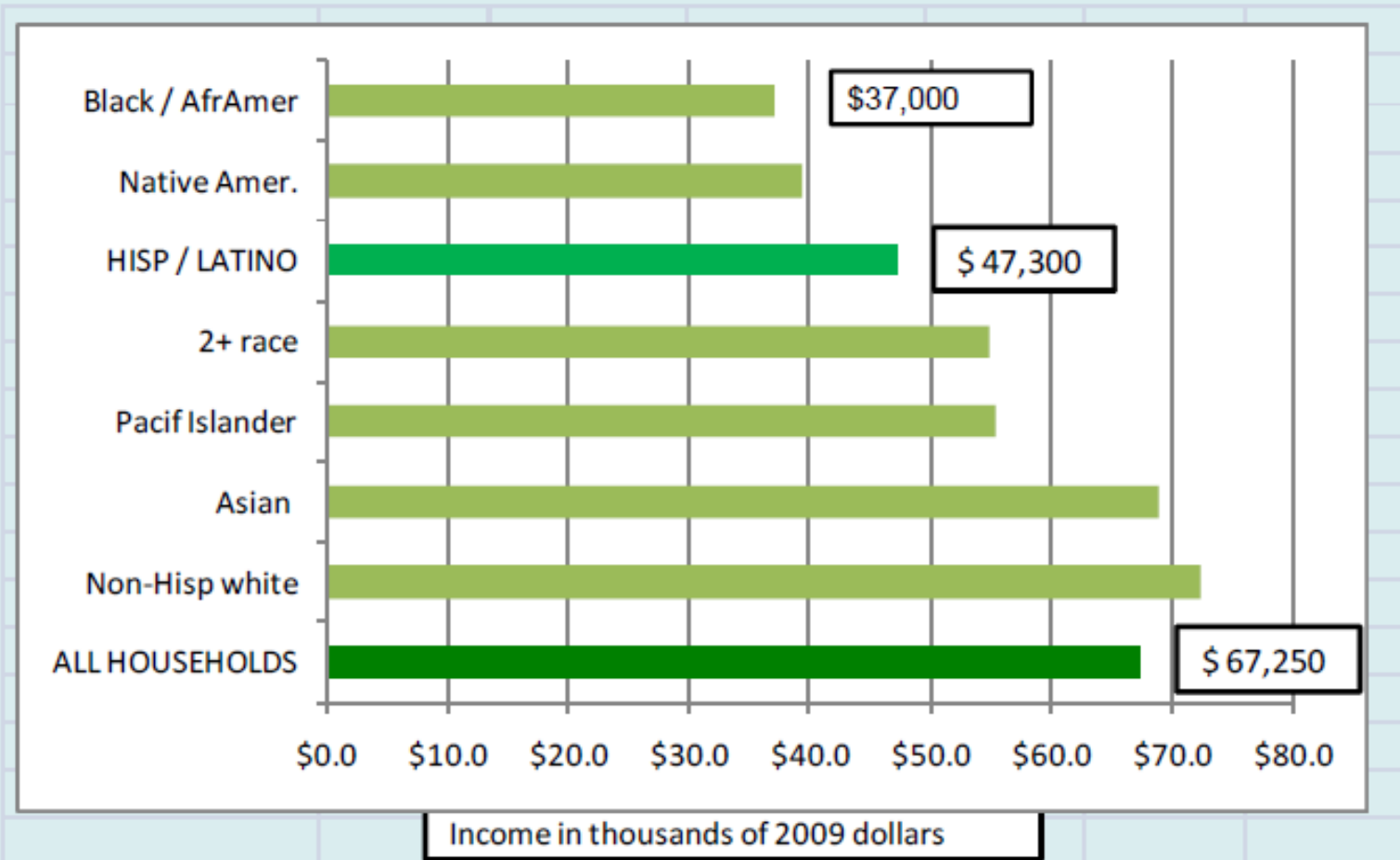
The region's population is becoming increasingly diverse:
2000



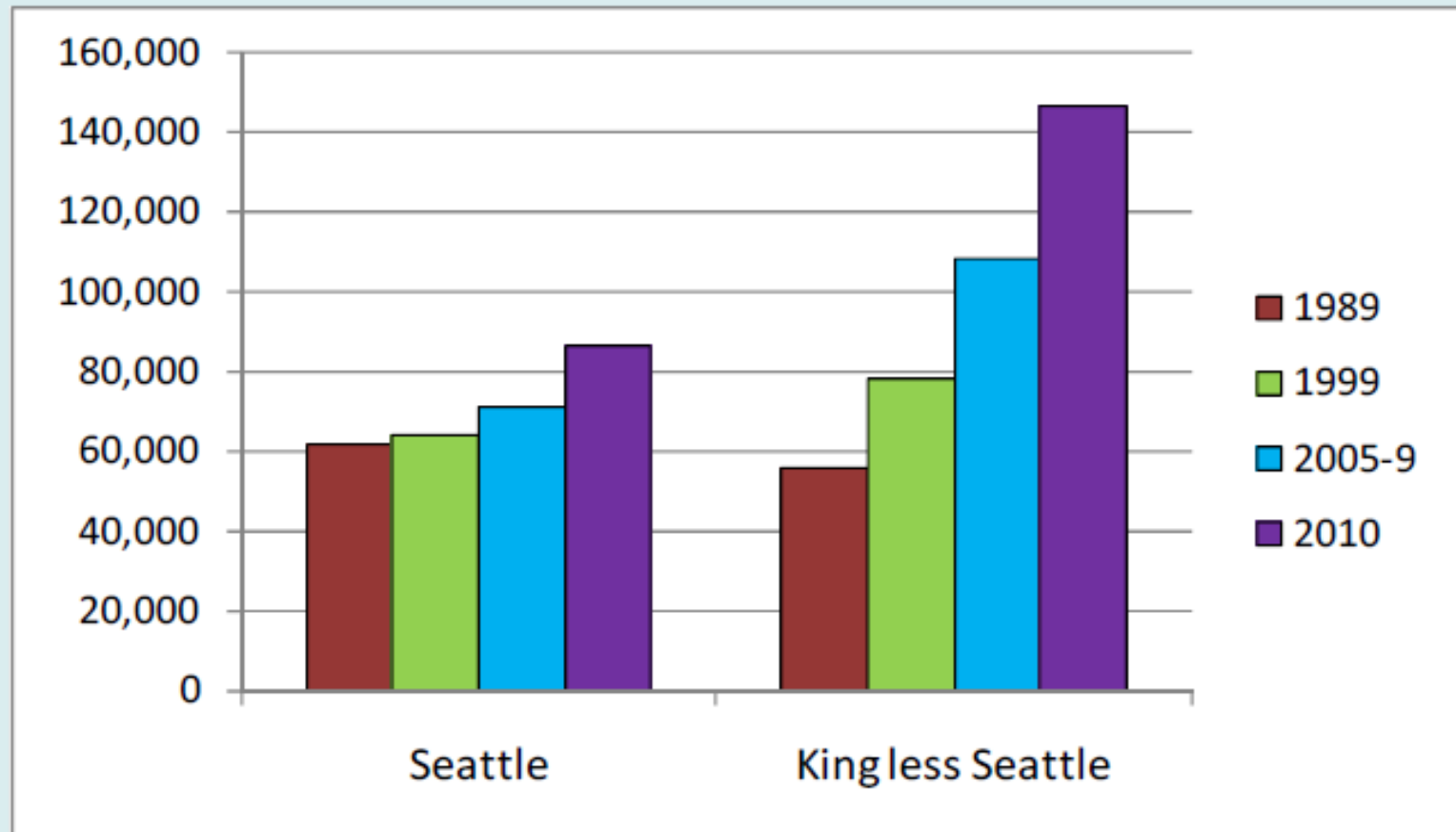
The region's population is becoming increasingly diverse: 2010



King County Median Household Income by Race/Ethnicity



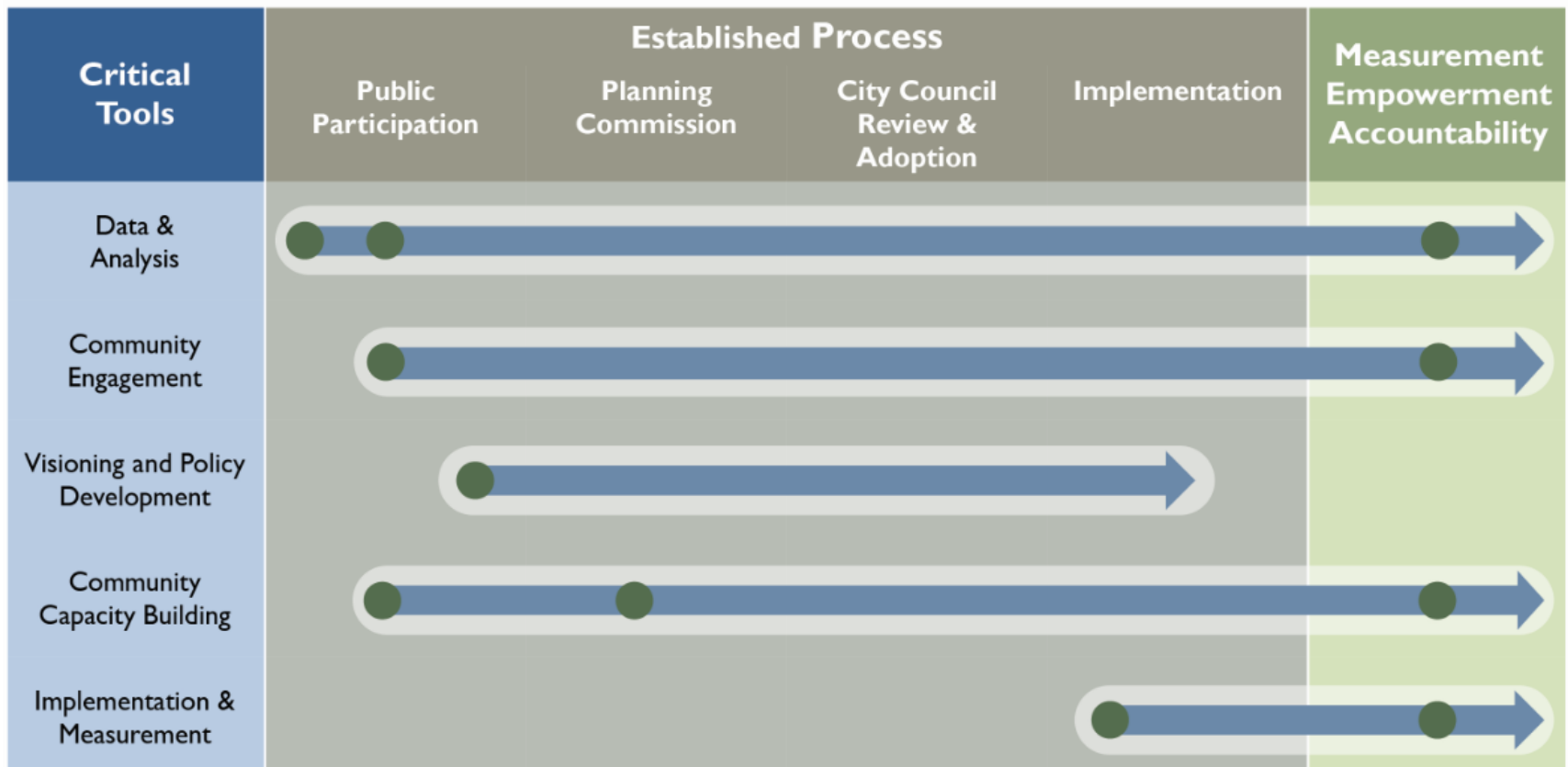
Numbers of persons below poverty: now primarily in the suburbs



Health and Equity Systems Change through Comprehensive Planning

Outcomes:

- 1) Broader engagement informed by data and analysis, focused on underserved community voices.
- 2) Effective policies that reflect community concerns and advance health and equity outcomes.
- 3) Comprehensive Plans as a tool of community empowerment and government accountability.



DATA

**REVEALING THE COMMUNITY'S
HEALTH AND EQUITY CHALLENGES
AND OPPORTUNITIES**

USING RACE AND EQUITY DATA TO INFORM SEATTLE'S 2030 PLAN

What are the community characteristics of different areas of Seattle?

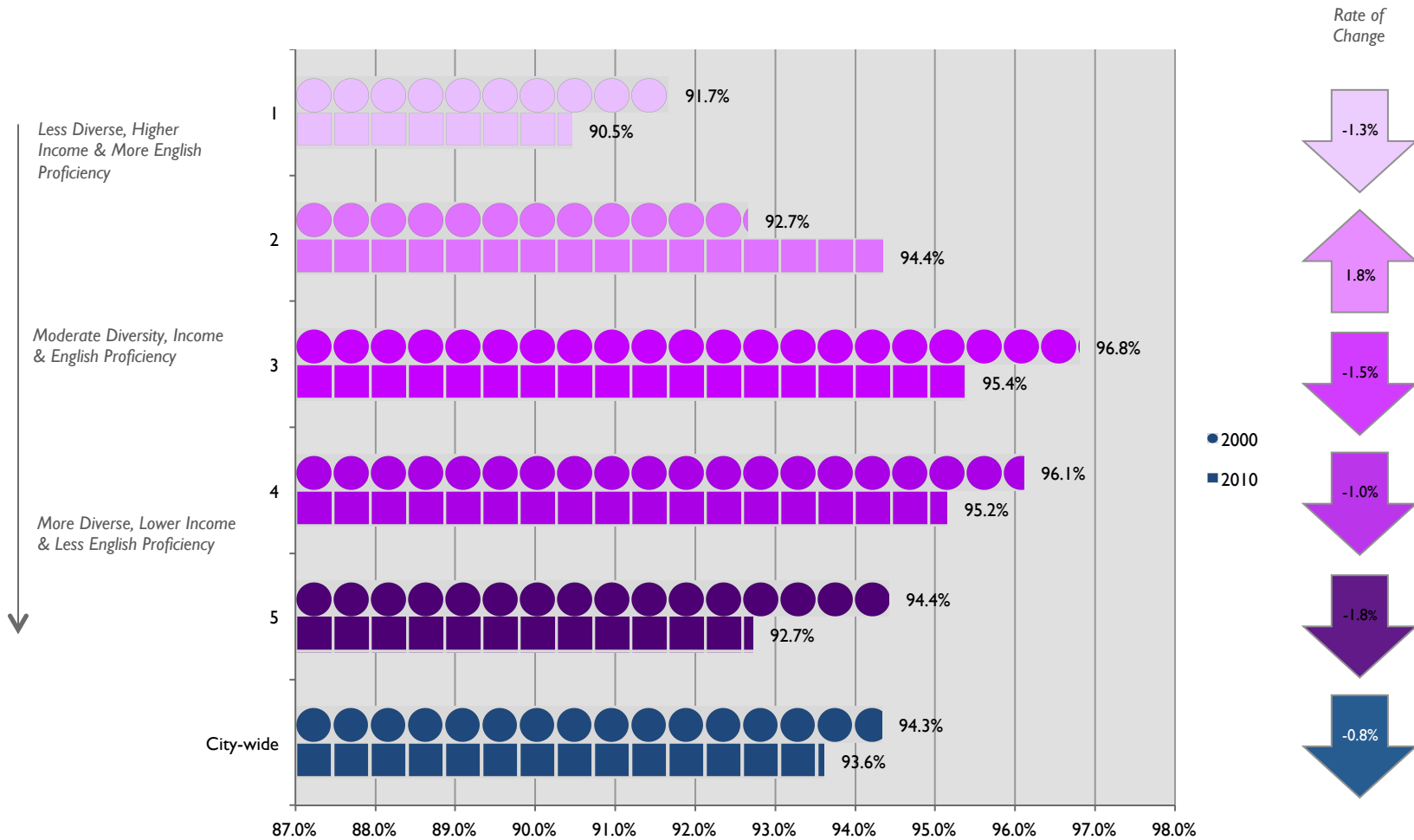
This map depicts areas in 2010 related to diversity, income and English proficiency at the census tract level in Seattle.



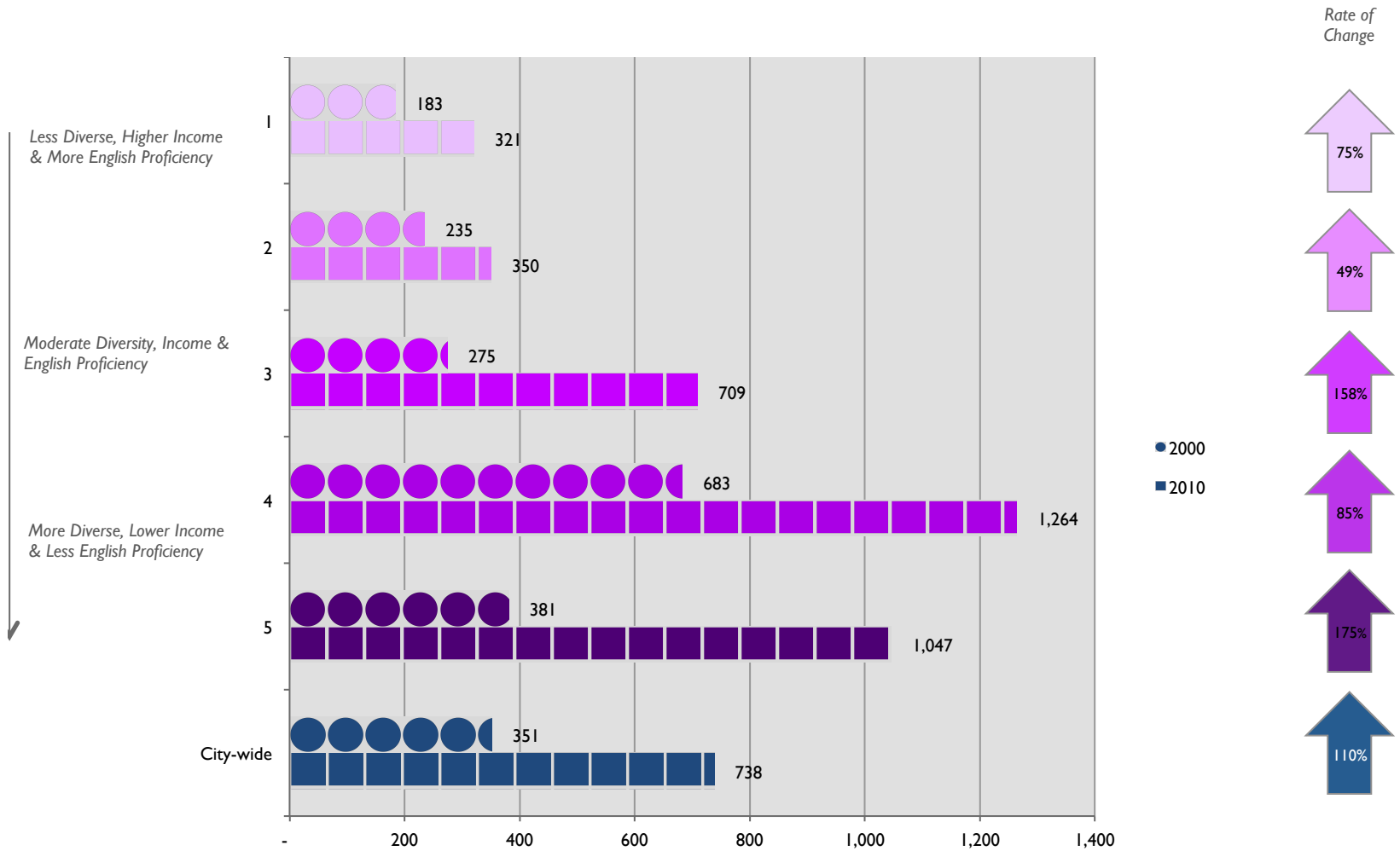
Seattle's Race and Social Justice Initiative (RSJI) seeks to

- Incorporate a racial equity lens to all citywide initiatives
- **Priority Populations** are defined as areas with lower income & poverty, higher percentage communities of color, and lower English-proficiency
- Identifying these areas helps to evaluate policies, programs and investments through the Comprehensive Plan

Access to Bus Stops in 2000 and 2010



Bus Frequency in 2000 and 2010



Transit Access

What areas of Seattle have access to transit stops?

This map depicts areas within 1/4 mile of a transit stop in 2010 related to diversity, income and English proficiency at the census tract level in Seattle.

Legend

Community Characteristics

- Less Diverse, Higher Income, & Higher English Proficiency
- Moderate Diversity, Income, & English Proficiency
- More Diverse, Lower Income, & Lower English Proficiency

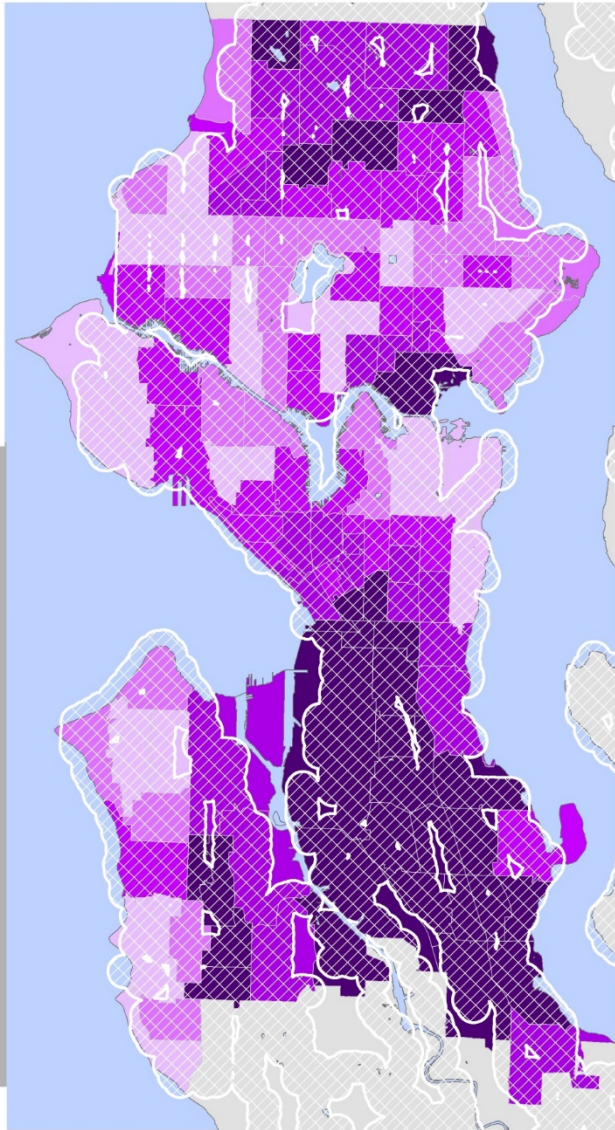
Access Area

- Buffer Size:
- 1/4 mile buffer



Data Source: 2010 Census & 2006-2010 5 Year American Community Survey

For detailed methodology and data sources see Map Notes section.



How many transit trips are taken in different areas in Seattle?

This map depicts the distribution of transit trips in 2010 related to diversity, income and English proficiency at the census tract level in Seattle.

Legend

Community Characteristics

- Less Diverse, Higher Income, & Higher English Proficiency
- Moderate Diversity, Income, & English Proficiency
- More Diverse, Lower Income, & Lower English Proficiency

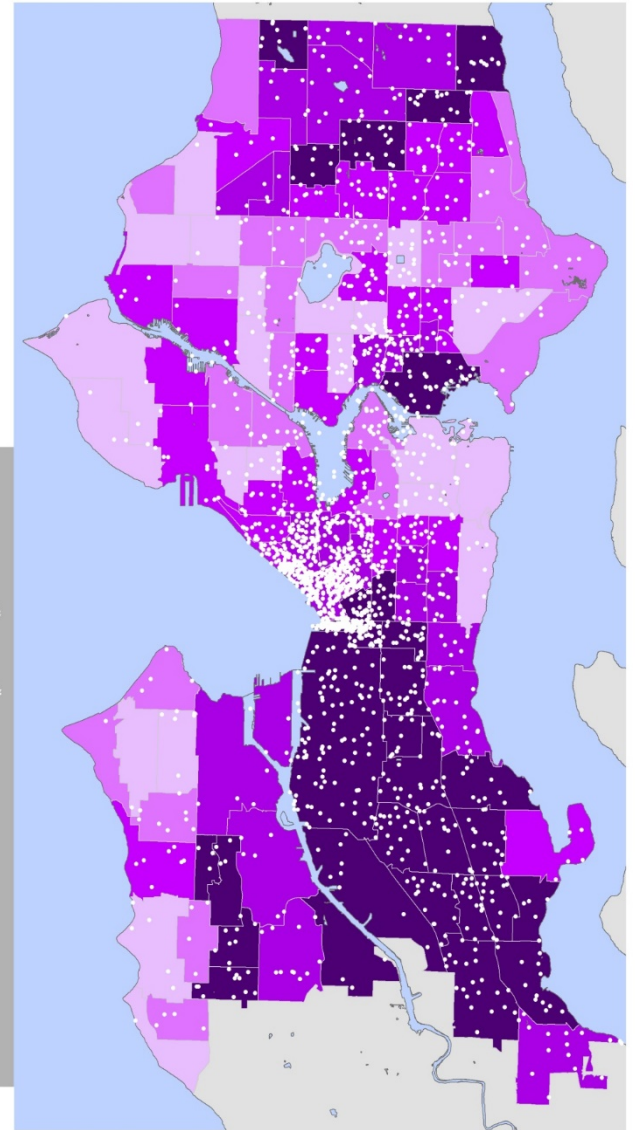
Transit Trips

- 1 Dot = 50 Trips

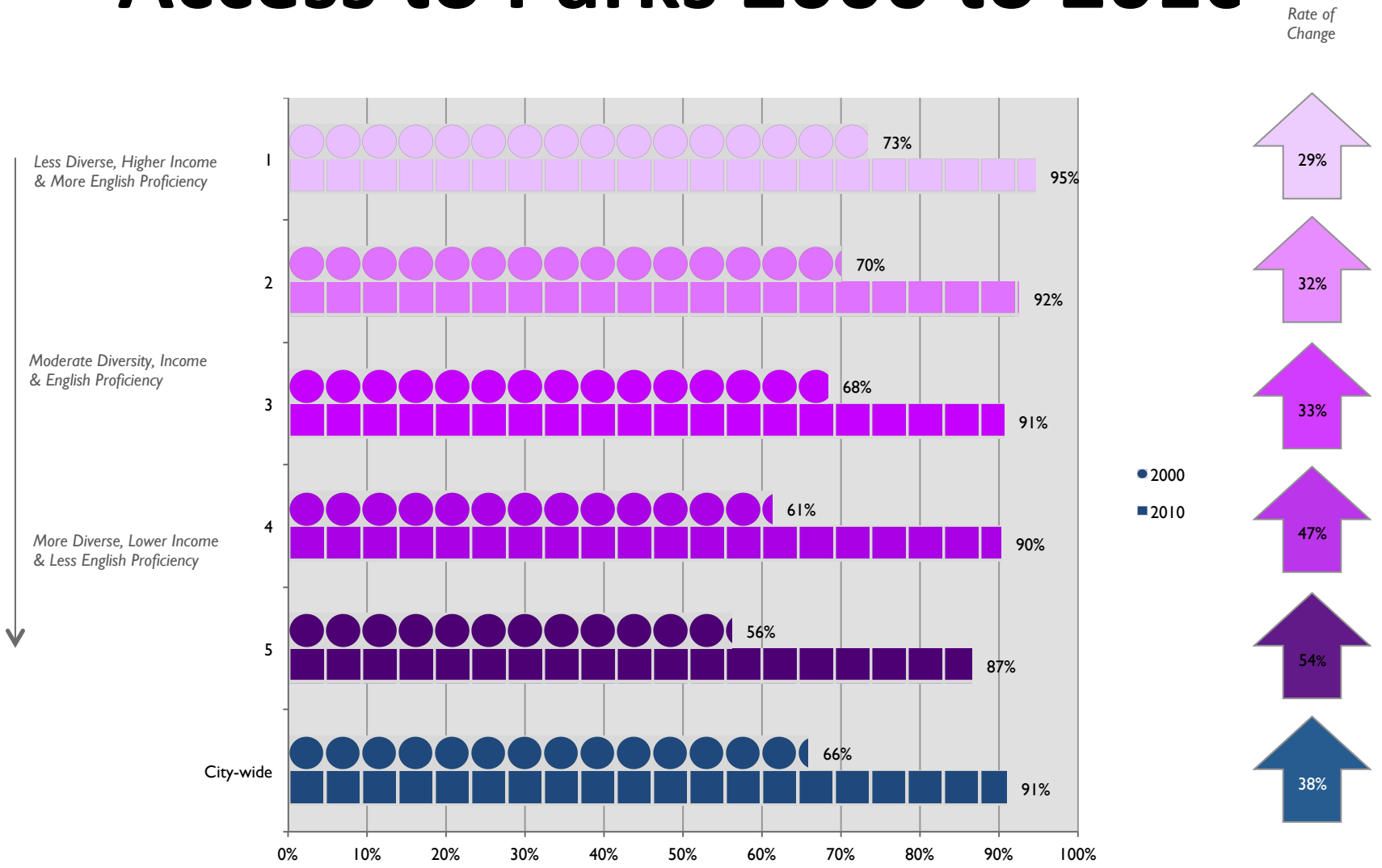


Data Source: 2010 Census & 2006-2010 5 Year American Community Survey

For detailed methodology and data sources see Map Notes section.



Access to Parks 2000 to 2010



Access to Parks 2000 to 2010

What areas of Seattle are served by close proximity to recreational facilities?

This map depicts areas with close proximity to recreational facilities in 2010 related to diversity, income and English proficiency at the census tract level in Seattle.

Legend

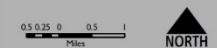
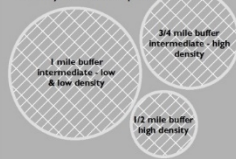
Community Characteristics

- Less Diverse, Higher Income, & Higher English Proficiency
- Moderate Diversity, Income, & English Proficiency
- More Diverse, Lower Income, & Lower English Proficiency

Parks

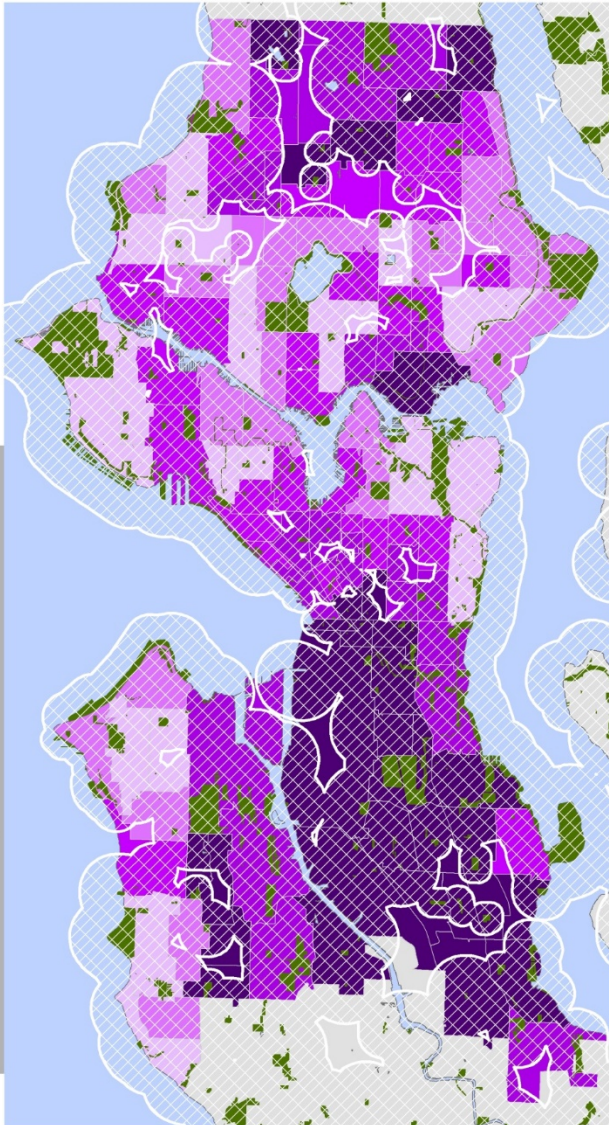
Access Area

Buffer size based on population density at service point



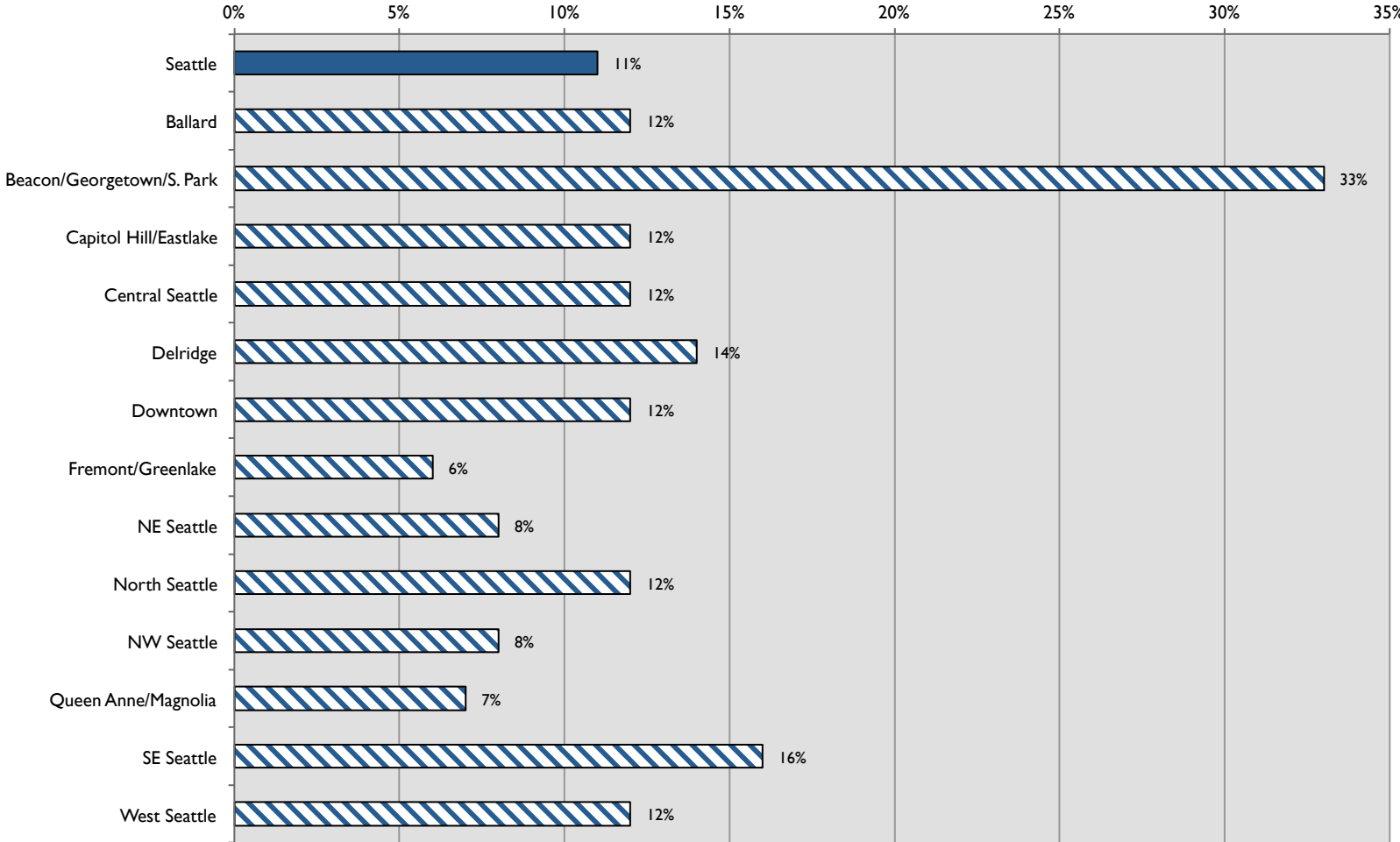
Data Source: 2010 Census & 2006-2010 5 Year American Community Survey

For detailed methodology and data sources see Map Notes section.



- Increased park access from 2000 to 2010 for all groups
- Large increase for Priority Populations

% of Adults with no physical activity



COMMUNITY ENGAGEMENT

**COMMUNITY INFORMING
CONDITIONS AND UNDERSTANDING/
SHARING THE DESIRED OUTCOME**

Community Engagement & Outreach

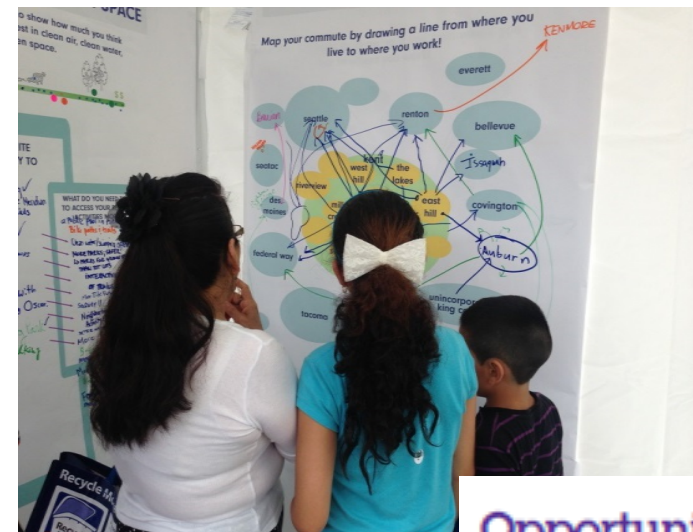


Context



Long-Term **VISION**
vision

Issues



Opportunities



COMMUNITY CAPACITY

**GROWING THE COMMUNITY'S
CAPACITY TO ENGAGE AND
PROVIDE SOLUTIONS**

Community Capacity Building

Data Collecting & Reporting



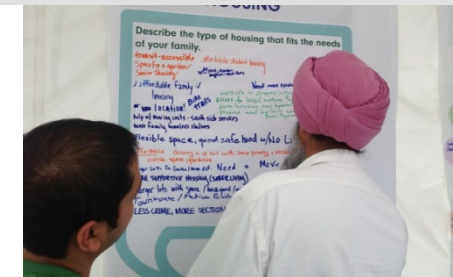
Support & Coordination



Long-Term VISION

VISION

Technical Support



PLANNING AND POLICIES

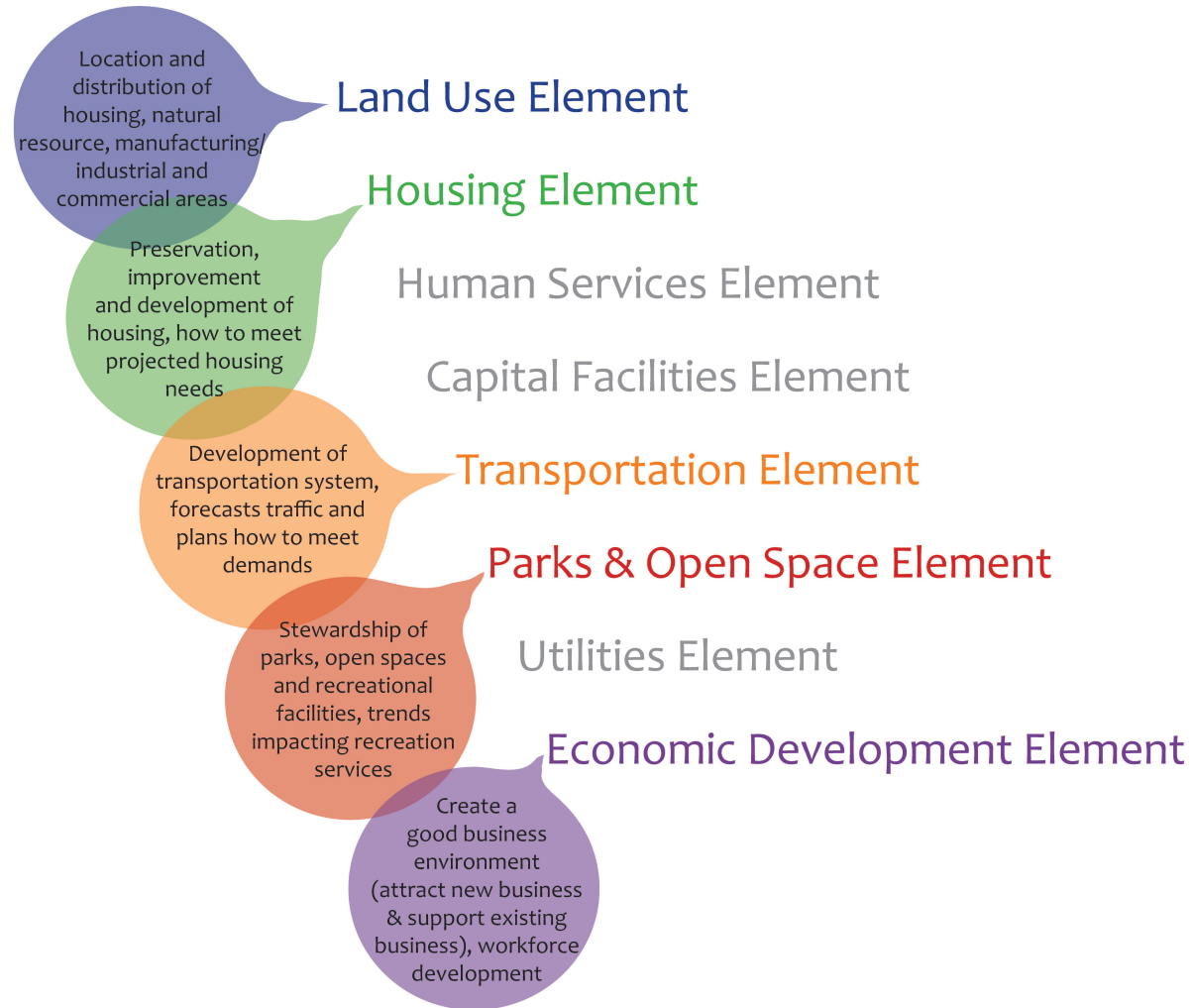
**PLANNING AND POLICY STRATEGIES
TO REVERSE TRENDS AND CHANGE
OUTCOMES**

Health and Wellness Element



HEALTH AND EQUITY IN THE COMP PLAN

Health and equity can be infused into the Comprehensive Plan through progressive policies tying health to land use, housing, transportation, parks, and economic development.



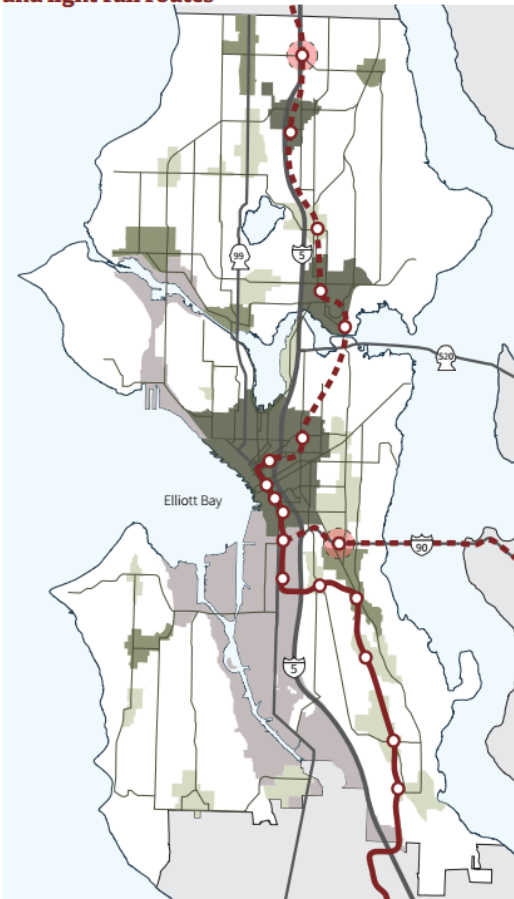
Growth Scenarios and Comprehensive Plan

How should Seattle address equitable access to housing, economic opportunity, parks and environment, health, and transportation to eliminate disparities?

- **Where should growth and investment go?**
- **What policies are needed to guide this growth and investment into the right places at the right times?**

GROWTH SCENARIOS

Seattle's urban centers, urban villages, and light rail routes



- urban centers
- manufacturing / industrial centers
- hub urban villages
- outside centers & villages
- residential urban villages
- potential new urban village locations alternative 3
- existing light rail
- planned light rail
- existing & planned light rail stations

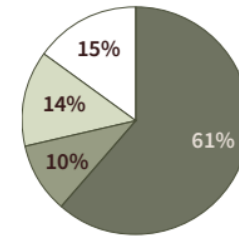
Planning Alternatives for Study in the Environmental Impact Statement

Alternative 1: Urban Center Focus

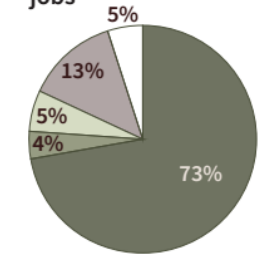
Most growth would be encouraged in our urban centers: Northgate, University District, Downtown, Uptown, South Lake Union, and Capitol/First Hill.

- More households and jobs would go in these locations than over the past 20 years.
- Most new households and jobs would be located in buildings 6 or more stories tall.
- Would help advance the regional growth strategy.

households



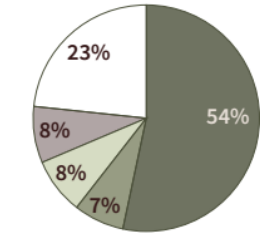
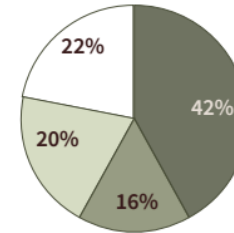
jobs



Alternative 2: Urban Village Focus

More growth would be encouraged in urban villages, such as Columbia City, Lake City, Crown Hill, Morgan Junction, Fremont, and Eastlake.

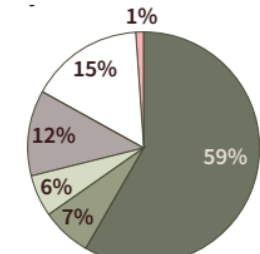
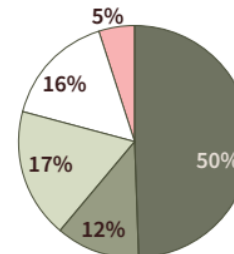
- Closest to how household growth has been over past 20 years, but more jobs would go to villages.
- Many new households and jobs would be in mixed-use buildings and apartments about 4-6 stories tall.
- Would help strengthen neighborhood business districts.



Alternative 3: Transit Focus

Growth would be encouraged around our existing and planned light rail stations in the Rainier Valley, Capitol Hill, the University District, Roosevelt, and Northgate.

- New urban villages would be located around the I-90 and NE 130th Street stations.
- Some village boundaries around light rail stations would expand.
- Taller buildings would accommodate households and jobs in urban centers while smaller buildings would be in other locations.
- Would take advantage of regional transit investments.



HEALTH AND EQUITY POLICIES

Land Use

- *Single family zoning and access for all to amenity rich areas.*
- *Growth outside of urban villages.*
- *Growth distribution.*
- *Transit focus - directing more growth to places with high-frequency transit.*

Transportation

- *Safety's relation to transportation.*
- *Prioritize Transit-dependent populations.*

Housing

- *Anti-displacement early warning tool.*
- *Home ownership shouldn't be prioritized over renting to avoid stigma.*
- *Cultural resources should get the same level of importance as traditional amenities like parks and sidewalks.*
- *Address exclusive nature of certain districts which have access to amenity rich areas.*

HEALTH AND EQUITY POLICIES

Economy

- *Training and living wage jobs related to growth.*
- *Racial disparities in unemployment.*
- *Small business support – currently not given same level of importance*

Capital Facilities

- *Surplus Property for affordable housing needs or other priorities of low-income communities and communities of color needs to be prioritized over parks*
- *Broadband and Digital Equity*
- *Siting and design of public facilities so as not to burden low income communities or communities of color more*

Environment

- *Environmental justice should be addressed – especially climate resilience*
- *Forestry goals should address how related to the disparity of tree canopies in lower versus higher income communities or the health implications associated with disparity*

Questions & Answers